



ISO 9001:2008  
Management system  
Certified by



# Flexcem 130

Flexible Cementitious Waterproofing Membrane

## Product description:

**Flexcem 130** is a liquid-applied 2-component flexible cementitious waterproofing coating. It is recommended to use for internal and external, old and new construction waterproof. The coating of Flexcem 130 after setting will form a hard, tough and flexible waterproofing membrane.

**Flexcem 130** has been formulated easily to apply by brushing, trowelling and spraying.

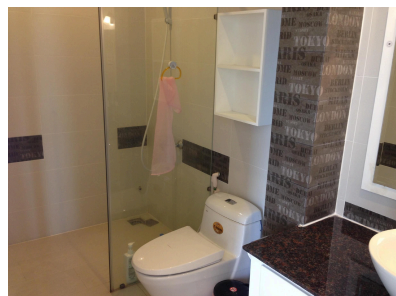
## Application areas:

- Rest room, kitchen, laundry areas, balcony and corridor.
- Water tank, swimming pool and basement wall.
- Concrete pipes, sewers, manholes.
- Bridge piers and other bridge structures.



## Advantages:

- Waterproofing and damp-proofing.
- Resistant to alkaline and various chemicals.
- Over bridging hairline cracks.
- Resistant to frost and thawing salts.
- Excellent adhesion on moist surfaces.
- Non-toxic, non-corrosive.
- Environment friendly product.



## Technical Specification:

Material base	Acrylate co-polymer combined with cementitious powder.
Supply form	2 components
Color after mixed	Gray
Ph value after mixed	11 - 12
Pot life	30 to 60 minutes (depending on temperature)
Consumption	Approx. 2.0 kg to 2.5 kg/m <sup>2</sup>
Packaging	24 kg per set
Shelf life	12 month.
Storage	Store on a pallet at room temperature. Avoid humidity



## APPLICATION INSTRUCTION

### Preparation of Substrates:

- The substrates must be clean and sound. Remove all the contaminants and loose particles of concrete.
- The surfaces should be washed with jet water to clean away dirt or dust.
- Repair all holes, cracks by mortar with **Acobond A38** additive. Seal all the joints and gap by **Elastoseal P100** Sealant.

- Apply angles fillets to floor and wall, vertical corners between two walls. These fillets should be formed by using repair mortar with **Acobond A38** additives or **Acofil M50**.

#### Mixing:

- Pour the liquid component into a clean barrel then slowly add the powder component to mix. Mix well thoroughly by a driller with suitable paddle from 300 to 600 rpm. The mixture should be mix until homogenous and free of lumps. Let the mixture rest about few minutes then slowly remix again and use.
- Depending on the application condition, the material may be spray, paint or trowel. Lower powder component content allows the material to be sprayed. Higher powder component content forms a viscous mortar that can be trowel. The mixing ratio should be determined by the application purpose.
- The gel time and cure times is depending on the temperature and humidity. Gel times range from 30 minutes to 60 minutes.

#### Application:

- Prior to the application, the surfaces should be saturate with clean water and keep damp. Any surface stagnate water should be swept away. Apply the well-mixed **Flexcem 130** onto the prepared substrate from the top to the bottom. Do not apply too thick more than 1.5 mm per layer. The next layer can be applied as soon as the first layer dry enough, but it is recommended to wait at least 6 hours.
- It is better to apply the first layer with vertical direction and the second layer is in horizontally, if the application is carried out by brush.
- Protect the applied surface avoid contact with water during the drying time. Protect the surface avoid traffic wearing.

#### Cleaning Tools:

- Clean the tools and mixing equipment immediately with water before setting. Hardened material can only be removed by mechanically.

#### Health protection:

- Safety goggles, rubber gloves, safety mask and clothing should be worn at all time.
- Avoid contact with eyes and prolonged contact with skin. In case of contact, flush eyes with plenty of clean water for at least 10 minutes and get prompt medical attention; wash skin thoroughly with soap and water.
- Keep out of reach of children. Please refer MSDS.

#### Physical Properties:

Resistance of water penetration. 0.2 kg/cm <sup>2</sup> for 6 hours.	No water penetration (mm).	DIN 1048 part 5.
Adhesion to substrate – after 28 days cure.	≥0.5 N/mm <sup>2</sup> .	ASTM D4541.
Tensile strength	>1.3 N/mm <sup>2</sup>	ASTM D 412.
Elongation at break	≥60%	ASTM D 412.
Crack bridging	No cracking at 1mm width.	ASTM D 836.
Shore A hardness	≥50	ASTM D 2240.
Set to touch.	< 2 hours	ASTM D 1640.
Contact to potable water.	Standard 21CFR 175.300 (4-1-07 edition) or AS/NZS 4020: 2005 SMEWW 2130B standard	

